

OCTOBER 2017

Infant Mortality and Selected Birth Characteristics

2016 South Carolina Residence Data

**South Carolina Department of Health
and Environmental Control**

Vital Statistics

2600 Bull Street
Columbia, SC 29201

Phone: (803) 898-3649

Fax: (803) 898-3661

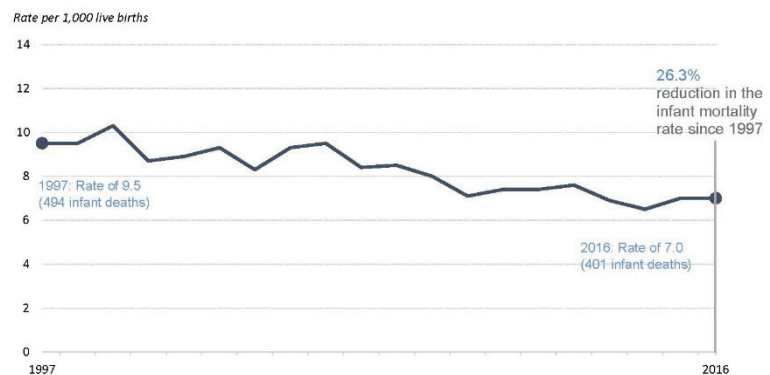


Executive Summary

Infant mortality is the death of an infant before his or her first birthday. Determining the infant mortality rate (IMR) gives us valuable information about the condition of maternal and infant health in our state. The infant mortality rate is considered a benchmark for the overall health of society.

Infant mortality is a cause of great concern for states, the nation, and the world. Its impact on families and society is profound. The South Carolina (S.C.) Department of Health and Environmental Control (DHEC) collects infant mortality data as a way to measure the health of infants and their mothers across the state. Over the past 20 years alone, the IMR in S.C. has decreased by 26.3% (see Table 1 and Figure below). Though we have made significant strides in the promotion of women's health and infant health before, during, and after pregnancy, S.C.'s IMR remains higher than the U.S. rate of 5.9 deaths per 1000 live births.¹ The 2016 infant mortality rate in S.C. did not change from 2015 and remains at 7.0 infant deaths per 1,000 live births, though S.C. did have four fewer deaths from the previous year (see Table 1). While the infant mortality rate among black and other minorities infants remains higher than that of white infants (see Table 3), that rate has declined 39% since 1999.²

Trend in Infant Mortality: 1997-2016



According to the data in this report, the leading causes of infant deaths in S.C. continue to be birth defects, disorders related to low birth weight and preterm birth, Sudden Infant Death Syndrome, and accidents (see Table 8). Sleep-related infant deaths, or Sudden Unexplained Infant Deaths (SUIDs) are those due to accidental suffocation and strangulation in bed, SIDS, or other undetermined and ill-defined causes. From 2015 to 2016, the number of deaths due to preterm birth/low birth weight decreased by 27.8% while deaths due to birth defects increased by 18.1% (see Table 8c). The number of sleep-related deaths decreased by 9% from 78 in 2015 to 71 in 2016 (see Table 10).

¹ Xu, J, Murphy, S.L., Kochanek, K.D., Arias, E (2017) Mortality in the United States, 2015, *NCHS Data Brief No. 267*, December 2016.

² South Carolina Department of Health and Environmental Control: SC Community Access Network (SCAN), <http://scangis.dhec.sc.gov/scan/index.aspx>, accessed on October 26, 2017.

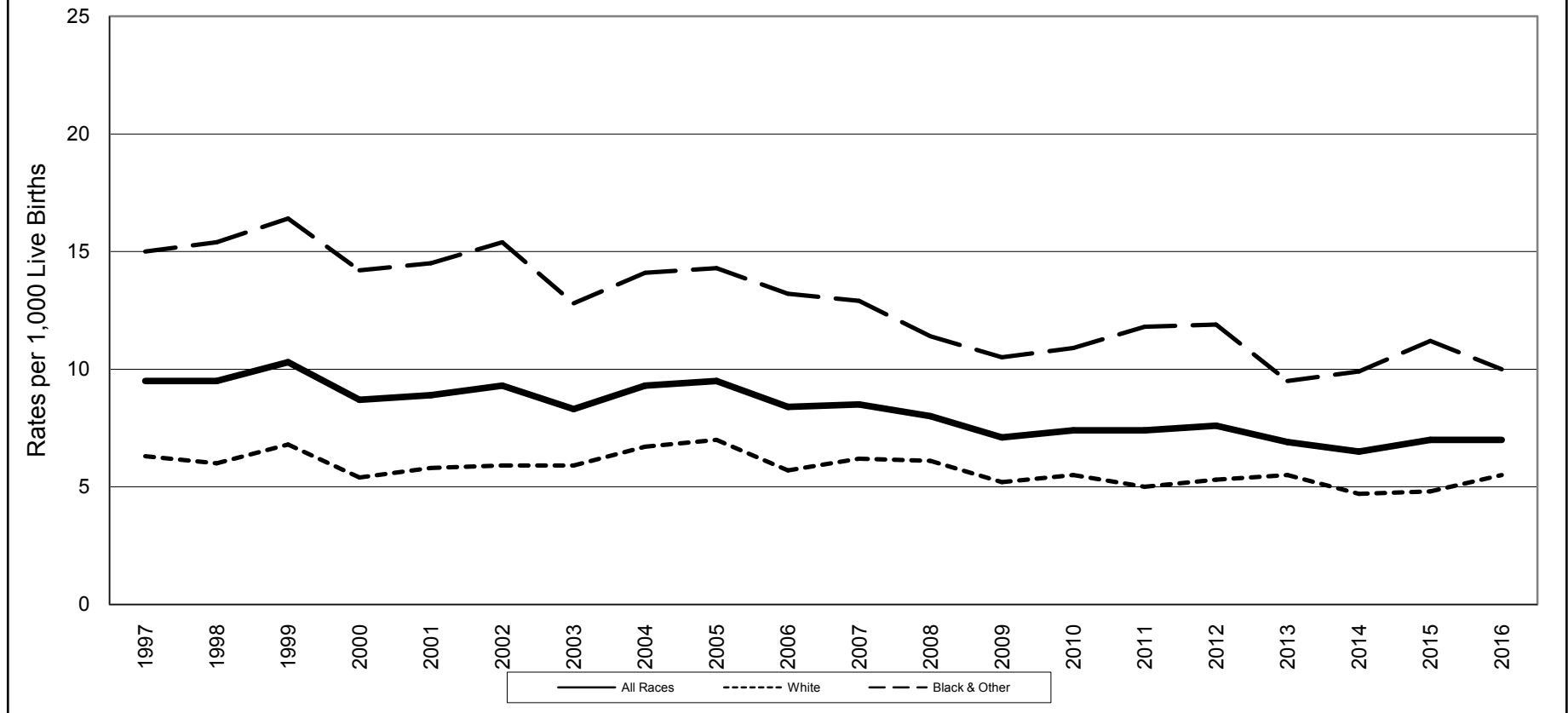
In S.C. from 2015 to 2016, there was significant improvement in several risk factors associated with poor pregnancy and maternal outcomes. The percent of births to teens and percent of tobacco use during pregnancy decreased significantly during this time period (see Table 12). Further, there was a significant decrease in the percent of inadequate prenatal care and a significant increase in the percent of early entry into prenatal care among Black and Other mothers. The disparity ratio in infant mortality rates among mothers of minority race, relative to their white counterparts, decreased from 2.0 in 2015 to 1.3 in 2016 for babies with a normal birth weight (see Table 14).

DHEC remains steadfast in its commitment to the promotion of women's health and infant health before, during, and after pregnancy. The agency continues to work with partners, like the S.C. Hospital Association, S.C Department of Health and Human Services (DHHS), the March of Dimes South Carolina Chapter and others to institute strategies that allow us to help improve the health of moms and babies in South Carolina.

Two state-level efforts addressing infant mortality are DHEC's Healthy Mothers, Healthy Babies (HMHB) Plan for Reducing Infant Mortality in South Carolina and the Birth Outcomes Initiative (BOI) led by DHHS. Our state is also participating in Collaborative Improvement and Innovation Networks (COIIN) convened by the federal government to address interconception care, perinatal regionalization, smoking cessation, early elective deliveries, and the promotion of safe sleep practices.

Other practices and programs that are being utilized in the fight against infant mortality include: hospital and physician emphasis on patient quality and safety; evidence-based maternal and infant home visitation programs; postpartum newborn home visits; March of Dimes funding, research, and education; and the S.C. Birth Defects Program. All who are engaged in this work are determined to give every child in South Carolina the best chance for a happy and productive life.

South Carolina Infant Mortality Rates¹ by Race² Residence Data, 1997- 2016



	1997	1998	1999	2000	2001	2002	2003	2004	2005	2006	2007	2008	2009	2010	2011	2012	2013	2014	2015	2016
All Races	9.5	9.5	10.3	8.7	8.9	9.3	8.3	9.3	9.5	8.4	8.5	8.0	7.1	7.4	7.4	7.6	6.9	6.5	7.0	7.0
White	6.3	6.0	6.8	5.4	5.8	5.9	5.9	6.7	7.0	5.7	6.2	6.1	5.2	5.5	5.0	5.3	5.5	4.7	4.8	5.5
Black & Other	15.0	15.4	16.4	14.2	14.5	15.4	12.8	14.1	14.3	13.2	12.9	11.4	10.5	10.9	11.8	11.9	9.5	9.9	11.2	10.0

¹Rates per 1,000 live births

²Race of mother

Table 1.
 Infant Mortality Rates¹ with 95% Confidence Intervals²
 South Carolina, 1997-2016
 (Residence Data)

Year	Number of Live Births	Number of Infant Deaths	Infant Mortality Rate	95% Confidence Intervals
1997	52,205	494	9.5	(8.7, 10.3)
1998	53,833	511	9.5	(8.7, 10.3)
1999	54,706	564	10.3	(9.4, 11.2)
2000	55,964	488	8.7	(7.9, 9.5)
2001	55,748	496	8.9	(8.1, 9.7)
2002	54,453	507	9.3	(8.5, 10.1)
2003	55,461	463	8.3	(7.5, 9.1)
2004	56,543	524	9.3	(8.5, 10.1)
2005	57,538	549	9.5	(8.7, 10.3)
2006	62,191	520	8.4	(7.6, 9.1)
2007	62,933	538	8.5	(7.8, 9.3)
2008	63,077	504	8.0	(7.3, 8.7)
2009	60,682	430	7.1	(6.4, 7.8)
2010	58,325	430	7.4	(6.7, 8.1)
2011	57,338	423	7.4	(6.7, 8.1)
2012	57,100	435	7.6	(6.9, 8.3)
2013	56,743	389	6.9	(6.2, 7.6)
2014	57,631	372	6.5	(5.8, 7.2)
2015	58,135	405	7.0	(6.3, 7.7)
2016	57,337	401	7.0	(6.3, 7.7)

Table 2.
 Infant Mortality Rates¹ with 95% Confidence Intervals²
 South Carolina
 1997-2001, 2002-2006, 2007-2011, 2012-2016
 (Residence Data)

Years	Number of Live Births	Number of Infant Deaths	Infant Mortality Rate	95% Confidence Intervals
1997-2001	272,456	2,553	9.4	(9.0, 9.7)
2002-2006	286,186	2,563	9.0	(8.6, 9.3)
2007-2011	302,355	2,325	7.7	(7.4, 8.0)
2012-2016	286,946	2,002	7.0	(6.7, 7.3)

¹Rates per 1,000 live births

² $r \pm 61.981 (r/n)^{1/2}$, where r = infant mortality rate and n = number of live births

Table 3.

Infant, Neonatal and Postneonatal Mortality and Mortality Rates¹ by Race²
 South Carolina
 2012, 2013, 2014, 2015 and 2016
 (Residence Data)

Infant Mortality									
	Total			White			Black & Other		
Year	Number of Live Birth	Number of Infant Death	Rate	Number of Live Birth	Number of Infant Death	Rate	Number of Live Birth	Number of Infant Death	Rate
2012	57,100*	435	7.6	37,092	197	5.3	19,959	238	11.9
2013	56,743*	389	6.9	37,177	204	5.5	19,513	185	9.5
2014	57,631*	372	6.5	37,923	177	4.7	19,660	195	9.9
2015	58,135*	405*	7.0	38,459	185	4.8	19,611	219	11.2
2016	57,337*	401	7.0	38,264	210	5.5	19,025	191	10.0

Neonatal Mortality (<28 days)									
	Total			White			Black & Other		
Year	Number of Live Birth	Number of Infant Death	Rate	Number of Live Birth	Number of Infant Death	Rate	Number of Live Birth	Number of Infant Death	Rate
2012	57,100*	270	4.7	37,092	118	3.2	19,959	152	7.6
2013	56,743*	263	4.6	37,177	138	3.7	19,513	125	6.4
2014	57,631*	246	4.3	37,923	113	3.0	19,660	133	6.8
2015	58,135*	265*	4.6	38,459	121	3.1	19,611	143	7.3
2016	57,337*	253	4.4	38,264	117	3.1	19,025	136	7.1

Postneonatal Mortality (28-364 days)									
	Total			White			Black & Other		
Year	Number of Live Birth	Number of Infant Death	Rate	Number of Live Birth	Number of Infant Death	Rate	Number of Live Birth	Number of Infant Death	Rate
2012	57,100*	165	2.9	37,092	79	2.1	19,959	86	4.3
2013	56,743*	126	2.2	37,177	66	1.8	19,513	60	3.1
2014	57,631*	126	2.2	37,923	64	1.7	19,660	62	3.2
2015	58,135*	140	2.4	38,459	64	1.7	19,611	76	3.9
2016	57,337*	148	2.6	38,264	93	2.4	19,025	55	2.9

¹Rates per 1,000 live births

²Race of mother

*Includes unknown race

Table 4.
Infant Mortality and Infant Mortality Rates¹
South Carolina and Each County, 2016, 2014-2016, 2011-2013
(Residence Data)

County of Residence	2016		2014-2016		2011-2013	
	Number	Rate	Number	Rate	Number	Rate
South Carolina	401	7.0	1,178	6.8	1,247	7.3
Abbeville	-	0	6	8.5	12	15.2
Aiken	12	6.1	33	5.6	35	6.3
Allendale	2	27.0	4	15.7	2	6.6
Anderson	15	6.5	52	7.6	54	8.0
Bamberg	-	0	4	10.1	4	8.4
Barnwell	2	8.1	5	6.6	10	10.6
Beaufort	9	4.6	25	4.1	25	4.1
Berkeley	11	4.0	44	5.4	54	7.0
Calhoun	3	24.6	7	17.6	2	4.5
Charleston	26	5.2	75	5.0	78	5.5
Cherokee	2	3.1	8	3.9	15	7.4
Chester	6	16.9	13	11.6	8	6.5
Chesterfield	7	14.5	14	9.2	20	12.9
Clarendon	4	12.8	10	10.0	12	11.5
Colleton	3	6.8	11	8.0	18	13.3
Darlington	9	11.6	20	8.3	23	9.7
Dillon	4	10.3	14	11.7	10	7.6
Dorchester	16	8.9	34	6.2	31	5.7
Edgefield	1	5.1	7	11.6	5	8.1
Fairfield	2	9.7	7	11.4	7	9.9
Florence	15	9.1	62	12.1	76	14.1
Georgetown	2	3.5	4	2.4	16	8.9
Greenville	35	5.6	106	5.6	109	6.0
Greenwood	11	13.9	19	7.7	25	9.3
Hampton	3	14.5	7	10.9	4	6.0
Horry	29	9.3	69	7.4	65	7.1
Jasper	4	11.5	7	6.5	6	6.2
Kershaw	8	10.1	17	7.4	15	7.1
Lancaster	8	7.5	27	8.7	19	7.0
Laurens	7	9.0	22	9.7	18	7.9
Lee	1	5.3	2	3.8	5	9.0
Lexington	20	6.1	64	6.6	63	6.5
McCormick	-	0	2	10.3	5	33.8
Marion	3	8.1	16	13.9	14	11.6
Marlboro	8	28.9	16	17.4	11	11.9
Newberry	3	6.6	10	7.3	8	6.1
Oconee	6	8.0	12	5.1	13	5.5
Orangeburg	12	12.4	32	10.9	38	11.2
Pickens	7	5.7	19	5.0	30	8.4
Richland	38	7.9	122	8.4	125	8.6
Saluda	-	0	3	3.9	7	9.7
Spartanburg	20	5.4	61	5.6	45	4.2
Sumter	11	8.0	32	7.3	26	5.7
Union	2	6.1	5	5.2	5	5.5
Williamsburg	-	0	3	3.0	15	14.8
York	14	4.6	46	5.2	59	6.8

¹Rates per 1,000 live births. Rates calculated with 20 or fewer deaths are unreliable and should be used cautiously.

Table 4-A.
White¹ Infant Mortality and Infant Mortality Rates²
South Carolina and Each County, 2016, 2014-2016, 2011-2013
(Residence Data)

County of Residence	2016		2014-2016		2011-2013	
	Number	Rate	Number	Rate	Number	Rate
South Carolina	210	5.5	572	5.0	589	5.3
Abbeville	-	0	1	2.0	8	15.3
Aiken	3	2.3	15	3.9	17	4.6
Allendale	-	0	-	0	-	0
Anderson	10	5.4	30	5.5	34	6.5
Bamberg	-	0	-	0	1	6.5
Barnwell	2	14.4	4	10.7	1	2.3
Beaufort	3	2.1	13	2.9	15	3.4
Berkeley	7	3.4	22	3.7	22	3.9
Calhoun	1	18.2	2	9.3	-	0
Charleston	14	4.1	29	2.9	37	4.0
Cherokee	2	4.1	5	3.3	12	8.1
Chester	4	20.7	6	10.0	4	6.0
Chesterfield	3	9.7	10	10.9	10	11.2
Clarendon	2	14.1	5	11.3	2	4.4
Colleton	1	4.0	4	5.2	4	5.7
Darlington	3	8.0	8	6.6	7	5.9
Dillon	3	17.6	5	10.4	1	1.9
Dorchester	8	6.4	21	5.5	13	3.4
Edgefield	-	0	3	9.3	1	3.3
Fairfield	1	12.2	1	4.3	1	4.3
Florence	7	8.6	20	8.1	21	8.1
Georgetown	2	5.9	3	3.0	6	6.3
Greenville	22	4.6	64	4.4	66	4.8
Greenwood	4	8.0	7	4.5	12	7.4
Hampton	-	0	1	3.9	2	8.0
Horry	20	8.1	53	7.2	41	5.7
Jasper	2	10.4	3	5.0	4	7.8
Kershaw	6	10.7	10	6.1	9	5.9
Lancaster	5	6.4	17	7.6	11	5.7
Laurens	3	5.4	12	7.4	12	7.5
Lee	-	0	-	0	-	0
Lexington	12	4.6	46	5.9	40	5.2
McCormick	-	0	-	0	-	0
Marion	-	0	2	5.4	1	2.6
Marlboro	5	40.7	8	20.0	2	5.7
Newberry	1	3.6	5	6.1	2	2.5
Oconee	6	9.0	11	5.2	10	4.7
Orangeburg	2	6.5	4	4.4	9	9.1
Pickens	6	5.4	17	5.0	28	8.6
Richland	15	7.3	30	4.8	31	5.1
Saluda	-	0	2	3.5	4	7.3
Spartanburg	13	4.7	37	4.6	31	4.0
Sumter	3	4.8	5	2.5	8	3.7
Union	-	0	3	4.8	4	6.8
Williamsburg	-	0	-	0	4	11.9
York	9	4.1	28	4.4	41	6.5

¹Race of mother

²Rates per 1,000 live births. Rates calculated with 20 or fewer deaths are unreliable and should be used cautiously.

Table 4-B.
Black and Other¹ Infant Mortality and Infant Mortality Rates²
South Carolina and Each County, 2016, 2014-2016, 2011-2013
(Residence Data)

County of Residence	2016		2014-2016		2011-2013	
	Number	Rate	Number	Rate	Number	Rate
South Carolina	191	10.0	605	10.4	658	11.1
Abbeville	-	0	5	24.0	4	15.0
Aiken	9	13.5	18	9.2	18	10.0
Allendale	2	31.3	4	18.9	2	8.1
Anderson	5	10.5	22	15.5	20	13.9
Bamberg	-	0	4	15.3	3	9.3
Barnwell	-	0	1	2.6	9	17.6
Beaufort	6	11.7	12	7.6	10	5.9
Berkeley	4	5.5	22	10.0	32	15.2
Calhoun	2	29.9	5	27.3	2	10.1
Charleston	12	7.5	46	9.3	41	8.1
Cherokee	-	0	3	5.6	3	5.6
Chester	2	12.4	7	13.5	4	7.2
Chesterfield	4	23.0	4	6.6	10	15.2
Clarendon	2	11.7	5	9.0	10	16.9
Colleton	2	10.6	7	11.7	14	21.5
Darlington	6	15.0	12	10.0	16	13.5
Dillon	1	4.6	9	12.5	9	11.6
Dorchester	8	14.5	13	7.7	18	11.1
Edgefield	1	10.5	4	14.3	4	13.0
Fairfield	1	8.1	6	15.7	6	12.6
Florence	8	9.5	42	15.9	55	19.7
Georgetown	-	0	1	1.5	10	11.8
Greenville	13	8.7	42	9.3	43	9.9
Greenwood	7	23.9	12	12.8	13	12.3
Hampton	3	24.4	6	15.9	2	4.8
Horry	9	13.8	16	8.2	24	12.3
Jasper	2	12.7	4	8.3	2	4.5
Kershaw	2	8.6	7	11.0	6	10.4
Lancaster	3	10.6	10	11.3	8	10.3
Laurens	4	18.3	10	15.4	6	8.7
Lee	1	6.8	2	5.1	5	12.6
Lexington	8	12.2	17	8.9	23	11.6
McCormick	-	0	2	16.4	5	52.1
Marion	3	12.0	14	17.9	13	15.8
Marlboro	3	19.5	8	15.4	9	15.6
Newberry	2	11.2	5	9.1	6	11.5
Oconee	-	0	1	4.1	3	13.3
Orangeburg	10	15.1	28	13.9	29	12.0
Pickens	1	8.7	2	5.9	2	6.1
Richland	23	8.4	92	11.0	94	11.2
Saluda	-	0	1	5.1	3	17.2
Spartanburg	7	7.4	24	8.6	14	5.0
Sumter	8	10.7	27	11.4	18	7.5
Union	2	19.4	2	5.9	1	3.2
Williamsburg	-	0	3	4.2	11	16.2
York	5	6.2	18	7.4	18	7.5

¹Race of mother

²Rates per 1,000 live births. Rates calculated with 20 or fewer deaths are unreliable and should be used cautiously.

Table 5.

Infant, Neonatal and Postneonatal Mortality Rates¹ by Race²
 and Percent Changes from 2015 to 2016
 South Carolina
 (Residence Data)

Infant Mortality			
Year	Total	White	Black & Other
2015	7.0	4.8	11.2
2016	7.0	5.5	10.0
Percent Change	0%	14.6%	-10.7%

Neonatal Mortality			
Year	Total	White	Black & Other
2015	4.6	3.1	7.3
2016	4.4	3.1	7.1
Percent Change	-4.3%	0%	-2.7%

Postneonatal Mortality			
Year	Total	White	Black & Other
2015	2.4	1.7	3.9
2016	2.6	2.4	2.9
Percent Change	8.3%	41.2%	-25.6%

¹Rates per 1,000 live births

²Race of mother

Table 6.
Neonatal Mortality and Neonatal Mortality Rates¹
South Carolina and Each County, 2016, 2014-2016, 2011-2013
(Residence Data)

County of Residence	2016		2014-2016		2011-2013	
	Number	Rate	Number	Rate	Number	Rate
South Carolina	253	4.4	764	4.4	787	4.6
Abbeville	-	0	2	2.8	10	12.7
Aiken	8	4.1	22	3.8	24	4.3
Allendale	2	27.0	4	15.7	2	6.6
Anderson	10	4.3	35	5.1	26	3.9
Bamberg	-	0	4	10.1	4	8.4
Barnwell	-	0	-	0	6	6.4
Beaufort	6	3.1	19	3.1	16	2.6
Berkeley	7	2.5	28	3.4	31	4.0
Calhoun	2	16.4	6	15.1	2	4.5
Charleston	11	2.2	45	3.0	50	3.5
Cherokee	-	0	5	2.5	7	3.5
Chester	3	8.5	8	7.2	5	4.1
Chesterfield	3	6.2	10	6.6	13	8.4
Clarendon	2	6.4	4	4.0	7	6.7
Colleton	1	2.3	4	2.9	13	9.6
Darlington	2	2.6	8	3.3	10	4.2
Dillon	3	7.7	9	7.5	7	5.3
Dorchester	9	5.0	20	3.6	21	3.9
Edgefield	1	5.1	4	6.7	4	6.5
Fairfield	1	4.9	5	8.1	5	7.0
Florence	11	6.6	40	7.8	50	9.3
Georgetown	1	1.7	3	1.8	11	6.1
Greenville	18	2.9	62	3.3	69	3.8
Greenwood	7	8.8	13	5.2	21	7.8
Hampton	2	9.7	3	4.7	2	3.0
Horry	19	6.1	44	4.7	37	4.0
Jasper	4	11.5	7	6.5	5	5.2
Kershaw	7	8.8	12	5.3	8	3.8
Lancaster	6	5.6	21	6.8	13	4.8
Laurens	5	6.4	16	7.0	12	5.2
Lee	1	5.3	2	3.8	3	5.4
Lexington	12	3.7	42	4.3	42	4.3
McCormick	-	0	2	10.3	3	20.3
Marion	2	5.4	9	7.8	12	10.0
Marlboro	5	18.1	10	10.9	11	11.9
Newberry	1	2.2	8	5.8	5	3.8
Oconee	5	6.7	9	3.8	9	3.8
Orangeburg	12	12.4	28	9.6	22	6.5
Pickens	7	5.7	14	3.7	23	6.4
Richland	26	5.4	78	5.3	79	5.4
Saluda	-	0	2	2.6	5	6.9
Spartanburg	11	3.0	35	3.2	18	1.7
Sumter	10	7.3	21	4.8	13	2.8
Union	1	3.1	4	4.1	2	2.2
Williamsburg	-	0	1	1.0	11	10.8
York	9	3.0	36	4.1	38	4.4

¹Rates per 1,000 live births. Rates calculated with 20 or fewer deaths are unreliable and should be used cautiously.

Table 6-A.
White¹ Neonatal Mortality and Neonatal Mortality Rates²
South Carolina and Each County, 2016, 2014-2016, 2011-2013
(Residence Data)

County of Residence	2016		2014-2016		2011-2013	
	Number	Rate	Number	Rate	Number	Rate
South Carolina	117	3.1	351	3.1	360	3.2
Abbeville	-	0	-	0	6	11.5
Aiken	3	2.3	10	2.6	11	3.0
Allendale	-	0	-	0	-	0
Anderson	5	2.7	19	3.5	17	3.2
Bamberg	-	0	-	0	1	6.5
Barnwell	-	0	-	0	1	2.3
Beaufort	2	1.4	10	2.2	8	1.8
Berkeley	4	2.0	14	2.4	7	1.2
Calhoun	1	18.2	2	9.3	-	0
Charleston	5	1.5	16	1.6	25	2.7
Cherokee	-	0	3	2.0	6	4.0
Chester	1	5.2	2	3.3	2	3.0
Chesterfield	2	6.5	9	9.8	6	6.7
Clarendon	1	7.0	2	4.5	-	0
Colleton	-	0	-	0	3	4.3
Darlington	-	0	4	3.3	3	2.5
Dillon	2	11.8	4	8.3	-	0
Dorchester	2	1.6	9	2.4	7	1.9
Edgefield	-	0	1	3.1	-	0
Fairfield	-	0	-	0	1	4.3
Florence	4	4.9	9	3.6	10	3.9
Georgetown	1	2.9	2	2.0	4	4.2
Greenville	10	2.1	34	2.3	47	3.4
Greenwood	3	6.0	6	3.9	10	6.2
Hampton	-	0	1	3.9	1	4.0
Horry	14	5.7	33	4.5	27	3.7
Jasper	2	10.4	3	5.0	4	7.8
Kershaw	5	8.9	8	4.9	5	3.3
Lancaster	3	3.9	13	5.8	8	4.2
Laurens	3	5.4	9	5.5	8	5.0
Lee	-	0	-	0	-	0
Lexington	6	2.3	28	3.6	27	3.5
McCormick	-	0	-	0	-	0
Marion	-	0	1	2.7	-	0
Marlboro	3	24.4	4	10.0	2	5.7
Newberry	-	0	4	4.9	1	1.3
Oconee	5	7.5	9	4.3	6	2.8
Orangeburg	2	6.5	3	3.3	4	4.1
Pickens	6	5.4	12	3.5	21	6.5
Richland	8	3.9	20	3.2	21	3.4
Saluda	-	0	1	1.8	3	5.4
Spartanburg	5	1.8	17	2.1	9	1.2
Sumter	3	4.8	3	1.5	5	2.3
Union	-	0	3	4.8	2	3.4
Williamsburg	-	0	-	0	3	8.9
York	6	2.7	23	3.6	28	4.4

¹Race of mother

²Rates per 1,000 live births. Rates calculated with 20 or fewer deaths are unreliable and should be used cautiously.

Table 6-B.

Black and Other¹ Neonatal Mortality and Neonatal Mortality Rates²
 South Carolina and Each County, 2016, 2014-2016, 2011-2013
 (Residence Data)

County of Residence	2016		2014-2016		2011-2013	
	Number	Rate	Number	Rate	Number	Rate
South Carolina	136	7.1	412	7.1	427	7.2
Abbeville	-	0	2	9.6	4	15.0
Aiken	5	7.5	12	6.1	13	7.2
Allendale	2	31.3	4	18.9	2	8.1
Anderson	5	10.5	16	11.2	9	6.2
Bamberg	-	0	4	15.3	3	9.3
Barnwell	-	0	-	0	5	9.8
Beaufort	4	7.8	9	5.7	8	4.8
Berkeley	3	4.2	14	6.4	24	11.4
Calhoun	1	14.9	4	21.9	2	10.1
Charleston	6	3.8	29	5.9	25	5.0
Cherokee	-	0	2	3.7	1	1.9
Chester	2	12.4	6	11.6	3	5.4
Chesterfield	1	5.7	1	1.7	7	10.7
Clarendon	1	5.8	2	3.6	7	11.8
Colleton	1	5.3	4	6.7	10	15.4
Darlington	2	5.0	4	3.3	7	5.9
Dillon	1	4.6	5	6.9	7	9.0
Dorchester	7	12.7	11	6.5	14	8.7
Edgefield	1	10.5	3	10.8	4	13.0
Fairfield	1	8.1	5	13.1	4	8.4
Florence	7	8.3	31	11.7	40	14.3
Georgetown	-	0	1	1.5	7	8.3
Greenville	8	5.3	28	6.2	22	5.0
Greenwood	4	13.7	7	7.4	11	10.4
Hampton	2	16.3	2	5.3	1	2.4
Horry	5	7.7	11	5.7	10	5.1
Jasper	2	12.7	4	8.3	1	2.2
Kershaw	2	8.6	4	6.3	3	5.2
Lancaster	3	10.6	8	9.1	5	6.5
Laurens	2	9.1	7	10.8	4	5.8
Lee	1	6.8	2	5.1	3	7.5
Lexington	6	9.2	13	6.8	15	7.6
McCormick	-	0	2	16.4	3	31.3
Marion	2	8.0	8	10.2	12	14.6
Marlboro	2	13.0	6	11.5	9	15.6
Newberry	1	5.6	4	7.3	4	7.7
Oconee	-	0	-	0	3	13.3
Orangeburg	10	15.1	25	12.4	18	7.5
Pickens	1	8.7	2	5.9	2	6.1
Richland	18	6.6	58	6.9	58	6.9
Saluda	-	0	1	5.1	2	11.5
Spartanburg	6	6.3	18	6.5	9	3.2
Sumter	7	9.3	18	7.6	8	3.3
Union	1	9.7	1	2.9	-	0
Williamsburg	-	0	1	1.4	8	11.8
York	3	3.7	13	5.3	10	4.2

¹Race of mother

²Rates per 1,000 live births. Rates calculated with 20 or fewer deaths are unreliable and should be used cautiously.

Table 7.
Postneonatal Mortality and Postneonatal Mortality Rates¹
South Carolina and Each County, 2016, 2014-2016, 2011-2013
(Residence Data)

County of Residence	2016		2014-2016		2011-2013	
	Number	Rate	Number	Rate	Number	Rate
South Carolina	148	2.6	414	2.4	460	2.7
Abbeville	-	0	4	5.7	2	2.5
Aiken	4	2.0	11	1.9	11	2.0
Allendale	-	0	-	0	-	0
Anderson	5	2.2	17	2.5	28	4.2
Bamberg	-	0	-	0	-	0
Barnwell	2	8.1	5	6.6	4	4.3
Beaufort	3	1.5	6	1.0	9	1.5
Berkeley	4	1.5	16	2.0	23	3.0
Calhoun	1	8.2	1	2.5	-	0
Charleston	15	3.0	30	2.0	28	2.0
Cherokee	2	3.1	3	1.5	8	4.0
Chester	3	8.5	5	4.5	3	2.4
Chesterfield	4	8.3	4	2.6	7	4.5
Clarendon	2	6.4	6	6.0	5	4.8
Colleton	2	4.5	7	5.1	5	3.7
Darlington	7	9.0	12	5.0	13	5.5
Dillon	1	2.6	5	4.2	3	2.3
Dorchester	7	3.9	14	2.5	10	1.9
Edgefield	-	0	3	5.0	1	1.6
Fairfield	1	4.9	2	3.3	2	2.8
Florence	4	2.4	22	4.3	26	4.8
Georgetown	1	1.7	1	0.6	5	2.8
Greenville	17	2.7	44	2.3	40	2.2
Greenwood	4	5.0	6	2.4	4	1.5
Hampton	1	4.8	4	6.3	2	3.0
Horry	10	3.2	25	2.7	28	3.0
Jasper	-	0	-	0	1	1.0
Kershaw	1	1.3	5	2.2	7	3.3
Lancaster	2	1.9	6	1.9	6	2.2
Laurens	2	2.6	6	2.6	6	2.6
Lee	-	0	-	0	2	3.6
Lexington	8	2.5	22	2.3	21	2.2
McCormick	-	0	-	0	2	13.5
Marion	1	2.7	7	6.1	2	1.7
Marlboro	3	10.8	6	6.5	-	0
Newberry	2	4.4	2	1.5	3	2.3
Oconee	1	1.3	3	1.3	4	1.7
Orangeburg	-	0	4	1.4	16	4.7
Pickens	-	0	5	1.3	7	2.0
Richland	12	2.5	44	3.0	46	3.2
Saluda	-	0	1	1.3	2	2.8
Spartanburg	9	2.4	26	2.4	27	2.5
Sumter	1	0.7	11	2.5	13	2.8
Union	1	3.1	1	1.0	3	3.3
Williamsburg	-	0	2	2.0	4	3.9
York	5	1.7	10	1.1	21	2.4

¹Rates per 1,000 live births. Rates calculated with 20 or fewer deaths are unreliable and should be used cautiously.

Table 7-A.

White¹ Postneonatal Mortality and Postneonatal Mortality Rates²
 South Carolina and Each County, 2016, 2014-2016, 2011-2013
 (Residence Data)

County of Residence	2016		2014-2016		2011-2013	
	Number	Rate	Number	Rate	Number	Rate
South Carolina	93	2.4	221	1.9	229	2.1
Abbeville	-	0	1	2.0	2	3.8
Aiken	-	0	5	1.3	6	1.6
Allendale	-	0	-	0	-	0
Anderson	5	2.7	11	2.0	17	3.2
Bamberg	-	0	-	0	-	0
Barnwell	2	14.4	4	10.7	-	0
Beaufort	1	0.7	3	0.7	7	1.6
Berkeley	3	1.5	8	1.4	15	2.7
Calhoun	-	0	-	0	-	0
Charleston	9	2.6	13	1.3	12	1.3
Cherokee	2	4.1	2	1.3	6	4.0
Chester	3	15.5	4	6.7	2	3.0
Chesterfield	1	3.2	1	1.1	4	4.5
Clarendon	1	7.0	3	6.8	2	4.4
Colleton	1	4.0	4	5.2	1	1.4
Darlington	3	8.0	4	3.3	4	3.4
Dillon	1	5.9	1	2.1	1	1.9
Dorchester	6	4.8	12	3.1	6	1.6
Edgefield	-	0	2	6.2	1	3.3
Fairfield	1	12.2	1	4.3	-	0
Florence	3	3.7	11	4.5	11	4.3
Georgetown	1	2.9	1	1.0	2	2.1
Greenville	12	2.5	30	2.1	19	1.4
Greenwood	1	2.0	1	0.6	2	1.2
Hampton	-	0	-	0	1	4.0
Horry	6	2.4	20	2.7	14	1.9
Jasper	-	0	-	0	-	0
Kershaw	1	1.8	2	1.2	4	2.6
Lancaster	2	2.6	4	1.8	3	1.6
Laurens	-	0	3	1.8	4	2.5
Lee	-	0	-	0	-	0
Lexington	6	2.3	18	2.3	13	1.7
McCormick	-	0	-	0	-	0
Marion	-	0	1	2.7	1	2.6
Marlboro	2	16.3	4	10.0	-	0
Newberry	1	3.6	1	1.2	1	1.3
Oconee	1	1.5	2	1.0	4	1.9
Orangeburg	-	0	1	1.1	5	5.1
Pickens	-	0	5	1.5	7	2.2
Richland	7	3.4	10	1.6	10	1.6
Saluda	-	0	1	1.8	1	1.8
Spartanburg	8	2.9	20	2.5	22	2.8
Sumter	-	0	2	1.0	3	1.4
Union	-	0	-	0	2	3.4
Williamsburg	-	0	-	0	1	3.0
York	3	1.4	5	0.8	13	2.1

¹Race of mother

²Rates per 1,000 live births. Rates calculated with 20 or fewer deaths are unreliable and should be used cautiously.

Table 7-B.

Black and Other¹ Postneonatal Mortality and Postneonatal Mortality Rates²
 South Carolina and Each County, 2016, 2014-2016, 2011-2013
 (Residence Data)

County of Residence	2016		2014-2016		2011-2013	
	Number	Rate	Number	Rate	Number	Rate
South Carolina	55	2.9	193	3.3	231	3.9
Abbeville	-	0	3	14.4	-	0
Aiken	4	6.0	6	3.1	5	2.8
Allendale	-	0	-	0	-	0
Anderson	-	0	6	4.2	11	7.6
Bamberg	-	0	-	0	-	0
Barnwell	-	0	1	2.6	4	7.8
Beaufort	2	3.9	3	1.9	2	1.2
Berkeley	1	1.4	8	3.6	8	3.8
Calhoun	1	14.9	1	5.5	-	0
Charleston	6	3.8	17	3.5	16	3.2
Cherokee	-	0	1	1.9	2	3.7
Chester	-	0	1	1.9	1	1.8
Chesterfield	3	17.2	3	5.0	3	4.6
Clarendon	1	5.8	3	5.4	3	5.1
Colleton	1	5.3	3	5.0	4	6.1
Darlington	4	10.0	8	6.7	9	7.6
Dillon	-	0	4	5.5	2	2.6
Dorchester	1	1.8	2	1.2	4	2.5
Edgefield	-	0	1	3.6	-	0
Fairfield	-	0	1	2.6	2	4.2
Florence	1	1.2	11	4.2	15	5.4
Georgetown	-	0	-	0	3	3.5
Greenville	5	3.3	14	3.1	21	4.8
Greenwood	3	10.2	5	5.3	2	1.9
Hampton	1	8.1	4	10.6	1	2.4
Horry	4	6.1	5	2.6	14	7.2
Jasper	-	0	-	0	1	2.2
Kershaw	-	0	3	4.7	3	5.2
Lancaster	-	0	2	2.3	3	3.9
Laurens	2	9.1	3	4.6	2	2.9
Lee	-	0	-	0	2	5.0
Lexington	2	3.1	4	2.1	8	4.1
McCormick	-	0	-	0	2	20.8
Marion	1	4.0	6	7.7	1	1.2
Marlboro	1	6.5	2	3.8	-	0
Newberry	1	5.6	1	1.8	2	3.8
Oconee	-	0	1	4.1	-	0
Orangeburg	-	0	3	1.5	11	4.6
Pickens	-	0	-	0	-	0
Richland	5	1.8	34	4.1	36	4.3
Saluda	-	0	-	0	1	5.7
Spartanburg	1	1.1	6	2.2	5	1.8
Sumter	1	1.3	9	3.8	10	4.2
Union	1	9.7	1	2.9	1	3.2
Williamsburg	-	0	2	2.8	3	4.4
York	2	2.5	5	2.1	8	3.3

¹Race of mother

²Rates per 1,000 live births. Rates calculated with 20 or fewer deaths are unreliable and should be used cautiously.

Table 8.
Leading Causes of Infant Death by Age at Death
South Carolina, 2016
(Residence Data)

Cause of Infant Death (ICD-10 Codes)	Total	Under 1 Day	1-6 Days	7-27 Days	Neonatal (<28 days)	Post-Neonatal (28-364 days)
Total Infant Deaths	401	136	53	64	253	148
Congenital malformations, deformations, etc. (Q00-Q99)	85	26	10	13	49	36
Disorders related to short gestation and low birthweight, NEC (P07)	57	47	4	4	55	2
Accidents (V01-X59, Y85-Y86)	39	-	-	5	5	34
Sudden infant death syndrome (R95)	27	-	-	3	3	24
Fetus and newborn affected by maternal complications of pregnancy (P01)	20	19	-	1	20	-
Bacterial sepsis of newborn (P36)	16	2	3	10	15	1
Newborn affected by complication of placenta, etc. (P02)	14	12	2	-	14	-
Respiratory distress of newborn (P22)	13	2	6	5	13	-
Diseases of circulatory system (I00-I99)	9	3	-	1	4	5
Assault (homicide) (X85-Y09, Y87.1)	8	-	1	1	2	6
All other causes	113	25	27	21	73	40

Table 8a.
Leading Causes of White¹ Infant Death by Age at Death
South Carolina, 2016
(Residence Data)

Cause of Infant Death (ICD-10 Codes)	Total	Under 1 Day	1-6 Days	7-27 Days	Neonatal (<28 days)	Post-Neonatal (28-364 days)
Total White Infant Deaths	199	56	31	26	113	86
Congenital malformations, deformations, etc. (Q00-Q99)	57	18	6	9	33	24
Accidents (V01-X59, Y85-Y86)	22	-	-	4	4	18
Disorders related to short gestation and low birthweight, NEC (P07)	15	13	2	-	15	-
Sudden infant death syndrome (R95)	14	-	-	2	2	12
Fetus and newborn affected by maternal complications of pregnancy (P01)	9	8	-	1	9	-
Newborn affected by complication of placenta, etc. (P02)	6	6	-	-	6	-
Respiratory distress of newborn (P22)	5	-	4	1	5	-
Bacterial sepsis of newborn (P36)	5	1	3	-	4	1
Assault (homicide) (X85-Y09, Y87.1)	5	-	1	-	1	4
All other causes	61	10	15	9	34	27

¹Race of child

Table 8b.
Leading Causes of Black and Other¹ Infant Death by Age at Death
South Carolina, 2016
(Residence Data)

Cause of Infant Death (ICD-10 Codes)	Total	Under 1 Day	1-6 Days	7-27 Days	Neonatal (<28 days)	Post-Neonatal (28-364 days)
Total Black and Other Infant Deaths	202	80	22	38	140	62
Disorders related to short gestation and low birthweight, NEC (P07)	42	34	2	4	40	2
Congenital malformations, deformations, etc. (Q00-Q99)	28	8	4	4	16	12
Accidents (V01-X59, Y85-Y86)	17	-	-	1	1	16
Sudden infant death syndrome (R95)	13	-	-	1	1	12
Fetus and newborn affected by maternal complications of pregnancy (P01)	11	11	-	-	11	-
Bacterial sepsis of newborn (P36)	11	1	-	10	11	-
Newborn affected by complication of placenta, etc. (P02)	8	6	2	-	8	-
Respiratory distress of newborn (P22)	8	2	2	4	8	-
Diseases of circulatory system (I00-I99)	5	3	-	1	4	1
Intrauterine hypoxia and birth asphyxia (P20-P21)	5	2	1	2	5	-
All other causes	54	13	11	11	35	19

Table 8c.
 Percent Changes of Leading Causes of Infant Death
 from 2015 to 2016, South Carolina

Cause of Infant Death Ranked by 2016 Data (ICD-10 Codes)	2015	2016	% Change
Total Infant Deaths	405	401	-1.0%
Congenital malformations, deformations, etc. (Q00-Q99)	72	85	18.1%
Disorders related to short gestation and low birthweight, NEC (P07)	79	57	-27.8%
Accidents (V01-X59, Y85-Y86)	38	39	2.6%
Sudden infant death syndrome (R95)	28	27	-3.6%
Fetus and newborn affected by maternal complications of pregnancy (P01)	24	20	-16.7%
Bacterial sepsis of newborn (P36)	4	16	300.0%
Newborn affected by complication of placenta, etc. (P02)	13	14	7.7%
Respiratory distress of newborn (P22)	8	13	62.5%
Diseases of circulatory system (I00-I99)	9	9	0%
Assault (homicide) (X85-Y09, Y87.1)	8	8	0%
All other causes	122	113	-7.4%

Table 9.
 Breakdown of Infant Deaths due to Accidents
 South Carolina, 2010-2016
 (Residence Data)

	2010	2011	2012	2013	2014	2015	2016	Total (2010-2016)
Accidental suffocation and strangulation in bed (W75, W84)	25	21	39	21	31	35	33	205
Other accidental threats to breathing	2	2	0	2	3	1	3	13
Transportation	1	3	1	0	3	0	2	10
Drowning	0	1	0	0	1	0	0	2
Poison	0	1	0	0	1	0	0	2
Other accidents	4	2	1	0	1	2	1	11
Total	32	30	41	23	40	38	39	243

Table 10.
 Breakdown of Sudden Unexplained Infant Deaths
 South Carolina, 2010-2016
 (Residence Data)

	2010	2011	2012	2013	2014	2015	2016	Total (2010-2016)
Accidental suffocation and strangulation in bed (W75, W84)	25	21	39	21	31	35	33	205
Sudden Infant Death Syndrome (R95)	49	45	33	35	31	28	27	248
Hanging, strangulation, and suffocation, undetermined intent (Y20)	4	2	1	9	4	4	1	25
Other ill-defined and unspecified causes of mortality (R99)	8	10	12	6	11	11	10	68
Total	86	78	85	71	77	78	71	546

Table 11.
Leading Causes of Infant Death and Mortality Rates*,
South Carolina, 2014-2016
(Residence Data)

Table 11. South Carolina Infant Death, Resident Data, 2014-2016, All races

Rank	Cause of death	Number	Mortality rate*
Total Infant Deaths.....	1,178	6.8
1	Congenital malformations, deformations, etc. (Q00-Q99).....	213	1.2
2	Disorders related to short gestation and low birthweight (P07).....	207	1.2
3	Accidents (V01-X59, Y85-Y86).....	117	0.7
4	Sudden infant death syndrome (R95).....	86	0.5
5	Fetus and newborn affected by maternal complications of pregnancy (P01)...	62	0.4
6	Newborn affected by complications of placenta, etc. (P02).....	43	0.2
7	Bacterial sepsis of newborn (P36).....	28	0.2
8	Disease of circulatory system (I00-I99).....	24	0.1
9	Atelectasis (P28.0-P28.1)	23	0.1
10	Respiratory distress of newborn (P22).....	22	0.1
10	Necrotizing enterocolitis of newborn (P77).....	22	0.1
All Other Causes.....	331	1.9

Table 11-A. South Carolina Infant death, Resident Data, 2014-2016, White

Rank	Cause of death	Number	Mortality rate*
All White Infant Deaths.....	558	4.9
1	Congenital malformations, deformations, etc. (Q00-Q99).....	135	1.2
2	Accidents (V01-X59, Y85-Y86).....	66	0.6
3	Disorders related to short gestation and low birthweight (P07).....	64	0.6
4	Sudden infant death syndrome (R95).....	41	0.4
5	Fetus and newborn affected by maternal complications of pregnancy (P01)...	23	0.2
6	Newborn affected by complications of placenta, etc. (P02).....	20	0.2
7	Disease of circulatory system (I00-I99).....	13	0.1
8	Assault (homicide) (X85-Y09, Y87.1).....	12	0.1
9	Necrotizing enterocolitis of newborn (P77).....	11	0.1
10	Neonatal hemorrhage (P50-P52, P54).....	10	0.1
All Other Causes.....	163	1.4

Table 11-B. South Carolina Infant death, Resident Data, 2014-2016, Black and Others

Rank	Cause of death	Number	Mortality rate*
All Black And Other Infant Deaths.....	619	10.6
1	Disorders related to short gestation and low birthweight (P07).....	143	2.5
2	Congenital malformations, deformations, etc. (Q00-Q99).....	78	1.3
3	Accidents (V01-X59, Y85-Y86).....	51	0.9
4	Sudden infant death syndrome (R95).....	45	0.8
5	Fetus and newborn affected by maternal complications of pregnancy (P01)...	38	0.7
6	Newborn affected by complications of placenta, etc. (P02).....	23	0.4
7	Bacterial sepsis of newborn (P36).....	19	0.3
8	Atelectasis (P28.0-P28.1)	16	0.3
9	Respiratory distress of newborn (P22).....	13	0.2
10	Disease of circulatory system (I00-I99).....	11	0.2
10	Necrotizing enterocolitis of newborn (P77).....	11	0.2
All Other Causes.....	171	2.9

* Rates are per 1,000 live births.

Source: SC DHEC, Vital Statistics

Table 12.

Comparison of Characteristics for All Live Births, by Race¹
 Z-tests for differences in proportions³
 South Carolina, 2015 to 2016
 (Residence Data)

	2015		2016		Z-TEST	P-VALUE
	Percent	Number	Percent	Number		

MOTHER < 18 YEARS						
TOTAL ²	1.91	1,110	1.71	981	-2.5281	0.0115
White	1.56	600	1.41	538	-1.7653	0.0775
Black & Other	2.60	509	2.33	443	-1.6923	0.0906

MARITAL STATUS: UNMARRIED						
TOTAL ²	46.40	26,975	45.14	25,884	-4.2866	0.0000
White	33.08	12,722	32.17	12,309	-2.6904	0.0071
Black & Other	72.60	14,237	71.26	13,558	-2.9153	0.0036

OBESE PRIOR TO PREGNANCY						
TOTAL ²	29.08	16,906	30.19	17,310	4.1276	0.0000
White	24.02	9,238	25.21	9,647	3.8301	0.0001
Black & Other	39.03	7,654	40.23	7,653	2.4048	0.0162

TOBACCO USE DURING PREGNANCY						
TOTAL ²	9.78	5,686	9.11	5,223	-3.9000	0.0001
White	11.53	4,433	10.71	4,099	-3.5865	0.0003
Black & Other	6.38	1,252	5.88	1,119	-2.0572	0.0397

HISPANIC MOTHER						
TOTAL ²	8.35	4,852	8.74	5,013	2.4128	0.0158
White	11.77	4,526	12.20	4,670	1.8604	0.0628
Black & Other	1.66	326	1.80	343	1.0589	0.2897

VERY LOW BIRTHWEIGHT						
TOTAL ²	1.80	1,046	1.81	1,037	0.1193	0.9050
White	1.15	444	1.19	457	0.5124	0.6084
Black & Other	3.04	596	3.03	577	-0.0358	0.9714

LOW BIRTHWEIGHT						
TOTAL ²	9.55	5,549	9.59	5,497	0.2435	0.8076
White	7.18	2,761	7.34	2,810	0.8787	0.3796
Black & Other	14.15	2,774	14.10	2,682	-0.1351	0.8925

¹Race of mother

²Includes unknown races

³Proportions are expressed as percentages

Table 12. (continued)
 Comparison of Characteristics for All Live Births, by Race¹
 Z-tests for differences in proportions³
 South Carolina, 2015 to 2016
 (Residence Data)

	2015		2016		Z-TEST	P-VALUE
	Percent	Number	Percent	Number		

PREMATURE BIRTHS (< 37 WEEKS)						
TOTAL ²	11.05	6,426	11.15	6,391	0.5019	0.6157
White	9.37	3,604	9.53	3,648	0.7704	0.4410
Black & Other	14.32	2,809	14.38	2,736	0.1611	0.8720

VERY PREMATURE BIRTHS (< 32 WEEKS)						
TOTAL ²	2.00	1,163	1.98	1,136	-0.2341	0.8149
White	1.35	521	1.37	523	0.1450	0.8847
Black & Other	3.24	636	3.21	610	-0.2045	0.8379

PREMATURE 32-36 WEEKS BIRTHS						
TOTAL ²	9.05	5,263	9.17	5,255	0.6616	0.5082
White	8.02	3,083	8.17	3,125	0.7649	0.4443
Black & Other	11.08	2,173	11.17	2,126	0.2945	0.7683

KOTELCHUCK INDEX: ADEQUATE, ADEQUATE PLUS						
TOTAL ²	73.79	42,899	75.36	43,212	6.1371	0.0000
White	76.31	29,348	77.67	29,718	4.4611	0.0000
Black & Other	68.95	13,521	70.82	13,474	4.0192	0.0001

KOTELCHUCK INDEX: INADEQUATE						
TOTAL ²	19.52	11,346	18.69	10,718	-3.5595	0.0004
White	16.94	6,515	16.63	6,362	-1.1619	0.2453
Black & Other	24.51	4,807	22.79	4,336	-3.9784	0.0001

< 5 PRENATAL CARE VISITS						
TOTAL ²	6.04	3,512	5.73	3,286	-2.2382	0.0252
White	5.09	1,956	4.89	1,871	-1.2483	0.2119
Black & Other	7.86	1,541	7.38	1,404	-1.7704	0.0767

PRENATAL CARE BEGAN FIRST TRIMESTER						
TOTAL ²	69.78	40,564	70.70	40,535	3.4206	0.0006
White	72.85	28,017	73.30	28,049	1.4203	0.1555
Black & Other	63.83	12,517	65.53	12,468	3.5122	0.0004

¹Race of mother

²Includes unknown races

³Proportions are expressed as percentages

Table 12-A.

Comparison of Characteristics of Infants who Died, by Race¹
 Z-tests for differences in proportions³
 South Carolina, 2015 to 2016
 (Residence Data)

	2015		2016		Z-TEST	P-VALUE
	Percent	Number	Percent	Number		
MOTHER < 18 YEARS						
TOTAL ²	2.96	12	2.24	9	-0.6403	0.5220
White	3.24	6	2.38	5	-0.5197	0.6032
Black & Other	2.74	6	2.09	4	-0.4227	0.6725
MARITAL STATUS: UNMARRIED						
TOTAL ²	58.02	235	60.85	244	0.8161	0.4144
White	35.68	66	45.71	96	2.0241	0.0430
Black & Other	76.71	168	77.49	148	0.1861	0.8524
OBESE PRIOR TO PREGNANCY						
TOTAL ²	37.78	153	34.91	140	-0.8455	0.3978
White	30.81	57	29.05	61	-0.3820	0.7024
Black & Other	43.84	96	41.36	79	-0.5053	0.6134
TOBACCO USE DURING PREGNANCY						
TOTAL ²	14.81	60	13.72	55	-0.4461	0.6555
White	20.54	38	19.05	40	-0.3719	0.7099
Black & Other	10.05	22	7.85	15	-0.7728	0.4396
HISPANIC MOTHER						
TOTAL ²	5.43	22	6.73	27	0.7729	0.4396
White	10.27	19	10.95	23	0.2195	0.8263
Black & Other	1.37	3	2.09	4	0.5648	0.5722
VERY LOW BIRTHWEIGHT						
TOTAL ²	52.59	213	50.62	203	-0.5593	0.5759
White	43.78	81	42.38	89	-0.2810	0.7787
Black & Other	59.82	131	59.69	114	-0.0271	0.9784
LOW BIRTHWEIGHT						
TOTAL ²	71.60	290	66.08	265	-1.6921	0.0906
White	68.11	126	59.05	124	-1.8642	0.0623
Black & Other	74.43	163	73.82	141	-0.1401	0.8886

¹Race of mother

²Includes unknown races

³Proportions are expressed as percentages

Table 12-A. (continued)

Comparison of Characteristics of Infants who Died, by Race¹
 Z-tests for differences in proportions³
 South Carolina, 2015 to 2016
 (Residence Data)

	2015		2016		Z-TEST	P-VALUE
	Percent	Number	Percent	Number		

PREMATURE BIRTHS (< 37 WEEKS)						
TOTAL ²	69.88	283	67.58	271	-0.7029	0.4821
White	66.49	123	58.10	122	-1.7147	0.0864
Black & Other	72.60	159	78.01	149	1.2635	0.2064

VERY PREMATURE BIRTHS (< 32 WEEKS)						
TOTAL ²	52.84	214	50.87	204	-0.5587	0.5763
White	44.32	82	40.95	86	-0.6764	0.4988
Black & Other	59.82	131	61.78	118	0.4060	0.6848

PREMATURE 32-36 WEEKS BIRTHS						
TOTAL ²	17.04	69	16.71	67	-0.1246	0.9008
White	22.16	41	17.14	36	-1.2565	0.2089
Black & Other	12.79	28	16.23	31	0.9914	0.3215

KOTELCHUCK INDEX: ADEQUATE, ADEQUATE PLUS						
TOTAL ²	64.20	260	63.34	254	-0.2528	0.8005
White	63.24	117	63.81	134	0.1167	0.9071
Black & Other	64.84	142	62.83	120	-0.4233	0.6721

KOTELCHUCK INDEX: INADEQUATE						
TOTAL ²	30.12	122	30.92	124	0.2464	0.8054
White	30.27	56	29.05	61	-0.2656	0.7906
Black & Other	30.14	66	32.98	63	0.6193	0.5357

< 5 PRENATAL CARE VISITS						
TOTAL ²	35.56	144	33.17	133	-0.7139	0.4753
White	31.89	59	29.05	61	-0.6133	0.5396
Black & Other	38.36	84	37.70	72	-0.1373	0.8908

PRENATAL CARE BEGAN FIRST TRIMESTER						
TOTAL ²	60.25	244	55.86	224	-1.2619	0.2070
White	61.62	114	55.71	117	-1.1889	0.2345
Black & Other	58.90	129	56.02	107	-0.5892	0.5557

¹Race of mother

²Includes unknown races

³Proportions are expressed as percentages

Table 13.
Multiple Births Trends,
South Carolina, 2012-2016
(Residence Data)

Year	Singleton Births	Singleton Deaths	Infant Mortality Rate*	Twin Births***	Twin Deaths	Infant Mortality Rate*	Higher Order (3+) Births	Higher Order (3+) Deaths	Infant Mortality Rate*	Total Births**	Total Deaths**	Infant Mortality Rate*
2012	55,122	380	6.9	1,918	54	28.2	58	1	17.2	57,100	435	7.6
2013	54,668	326	6.0	2,003	55	27.5	72	6	83.3	56,743	389	6.9
2014	55,548	324	5.8	2,030	44	21.7	53	4	75.5	57,631	372	6.5
2015	56,006	352	6.3	2,085	48	23.0	44	5	113.6	58,135	405	7.0
2016	55,197	344	6.2	2,063	51	24.7	77	6	77.9	57,337	401	7.0
Total	276,541	1,726	6.2	10,099	252	25.0	304	22	72.4	286,946	2,002	7.0

* Rates are per 1,000 births. Rates calculated with 20 or fewer deaths are unreliable and should be used cautiously

** Includes Unknown Birth Number

*** Twin births do not include twin fetal deaths

Table 14.
 Infant Mortality Rates¹ by Race² and Birthweight³ Group
 South Carolina
 2014, 2015, and 2016
 (Residence Data)

Infant Mortality for Very Low Birthweight (0-1499 grams)									
	Total			White			Black & Other		
Year	Number of Live Birth	Number of Infant Death	Rate	Number of Live Birth	Number of Infant Death	Rate	Number of Live Birth	Number of Infant Death	Rate
2014	1,026*	197	192.0	444	68	153.2	579	129	222.8
2015	1,046*	213	207.6	444	81	182.4	596	131	219.8
2016	1,037*	203	195.8	457	89	194.7	577	114	197.6

Infant Mortality for Intermediate Low Birthweight (1500-2499 grams)									
	Total			White			Black & Other		
Year	Number of Live Birth	Number of Infant Death	Rate	Number of Live Birth	Number of Infant Death	Rate	Number of Live Birth	Number of Infant Death	Rate
2014	4,418*	49	11.1	2,275	29	12.7	2,139	20	9.4
2015	4,503*	77	17.4	2,317	45	19.4	2,178	32	14.7
2016	4,460*	62	13.9	2,353	35	14.9	2,105	27	12.8

Infant Mortality for Normal Birthweight (2500+ grams)									
	Total			White			Black & Other		
Year	Number of Live Birth	Number of Infant Death	Rate	Number of Live Birth	Number of Infant Death	Rate	Number of Live Birth	Number of Infant Death	Rate
2014	52,167*	122	2.3	35,197	78	2.2	16,935	44	2.6
2015	52,571*	111	2.1	35,689	57	1.6	16,835	54	3.2
2016	51,834*	132	2.5	35,450	82	2.3	16,343	50	3.1

¹Rates per 1,000 live births

²Race of mother

³Does not include missing birthweights

*Includes unknown race

Table 14-A.
 Neonatal Mortality Rates¹ by Race² and Birthweight³ Group
 South Carolina
 2014, 2015, and 2016
 (Residence Data)

Neonatal Mortality for Very Low Birthweight (0-1499 grams)									
	Total			White			Black & Other		
Year	Number of Live Birth	Number of Infant Death	Rate	Number of Live Birth	Number of Infant Death	Rate	Number of Live Birth	Number of Infant Death	Rate
2014	1,026*	173	168.6	444	60	135.1	579	113	195.2
2015	1,046*	184	179.3	444	70	157.7	596	113	189.6
2016	1,037*	176	169.7	457	71	155.4	577	105	182.0

Neonatal Mortality for Intermediate Low Birthweight (1500-2499 grams)									
	Total			White			Black & Other		
Year	Number of Live Birth	Number of Infant Death	Rate	Number of Live Birth	Number of Infant Death	Rate	Number of Live Birth	Number of Infant Death	Rate
2014	4,418*	32	7.2	2,275	22	9.7	2,139	10	4.7
2015	4,503*	48	10.9	2,317	34	14.7	2,178	14	6.4
2016	4,460*	29	6.5	2,353	16	6.8	2,105	13	6.2

Neonatal Mortality for Normal Birthweight (2500+ grams)									
	Total			White			Black & Other		
Year	Number of Live Birth	Number of Infant Death	Rate	Number of Live Birth	Number of Infant Death	Rate	Number of Live Birth	Number of Infant Death	Rate
2014	52,167*	40	0.8	35,197	31	0.9	16,935	9	0.5
2015	52,571*	31	0.6	35,689	16	0.4	16,835	15	0.9
2016	51,834*	46	0.9	35,450	28	0.8	16,343	18	1.1

¹Rates per 1,000 live births

²Race of mother

³Does not include missing birthweights

*Includes unknown race

Table 14-B.
 Postneonatal Mortality Rates¹ by Race² and Birthweight³ Group
 South Carolina
 2014, 2015, and 2016
 (Residence Data)

Postneonatal Mortality for Very Low Birthweight (0-1499 grams)									
	Total			White			Black & Other		
Year	Number of Live Birth	Number of Infant Death	Rate	Number of Live Birth	Number of Infant Death	Rate	Number of Live Birth	Number of Infant Death	Rate
2014	1,026*	24	23.4	444	8	18.0	579	16	27.6
2015	1,046*	29	28.3	444	11	24.8	596	18	30.2
2016	1,037*	27	26.0	477	18	37.7	577	9	15.6

Postneonatal Mortality for Intermediate Low Birthweight (1500-2499 grams)									
	Total			White			Black & Other		
Year	Number of Live Birth	Number of Infant Death	Rate	Number of Live Birth	Number of Infant Death	Rate	Number of Live Birth	Number of Infant Death	Rate
2014	4,418*	17	3.8	2,275	7	3.1	2,139	10	4.7
2015	4,503*	29	6.6	2,317	11	4.7	2,178	18	8.3
2016	4,460*	33	7.4	2,353	19	8.1	2,105	14	6.7

Postneonatal Mortality for Normal Birthweight (2500+ grams)									
	Total			White			Black & Other		
Year	Number of Live Birth	Number of Infant Death	Rate	Number of Live Birth	Number of Infant Death	Rate	Number of Live Birth	Number of Infant Death	Rate
2014	52,167*	82	1.6	35,197	47	1.3	16,935	35	2.1
2015	52,571*	80	1.5	35,689	41	1.1	16,835	39	2.3
2016	51,834*	86	1.7	35,450	54	1.5	16,343	32	2.0

¹Rates per 1,000 live births

²Race of mother

³Does not include missing birthweights

*Includes unknown race

Figure 1
Percentage of Infant Deaths by Birthweight Group
South Carolina, 2014-2016 Residence Data

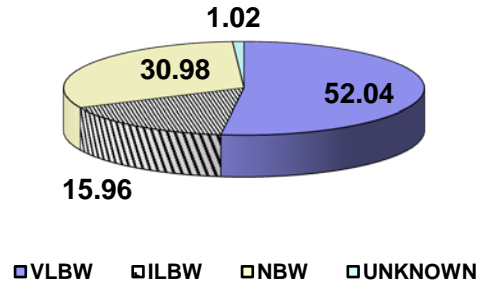


Figure 1-A
Percentage of White Infant Deaths by Birthweight Group
South Carolina, 2014-2016 Residence Data

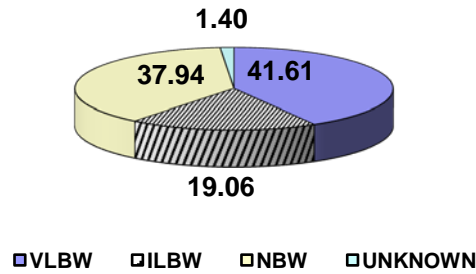
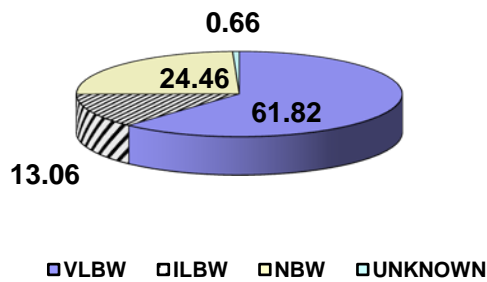
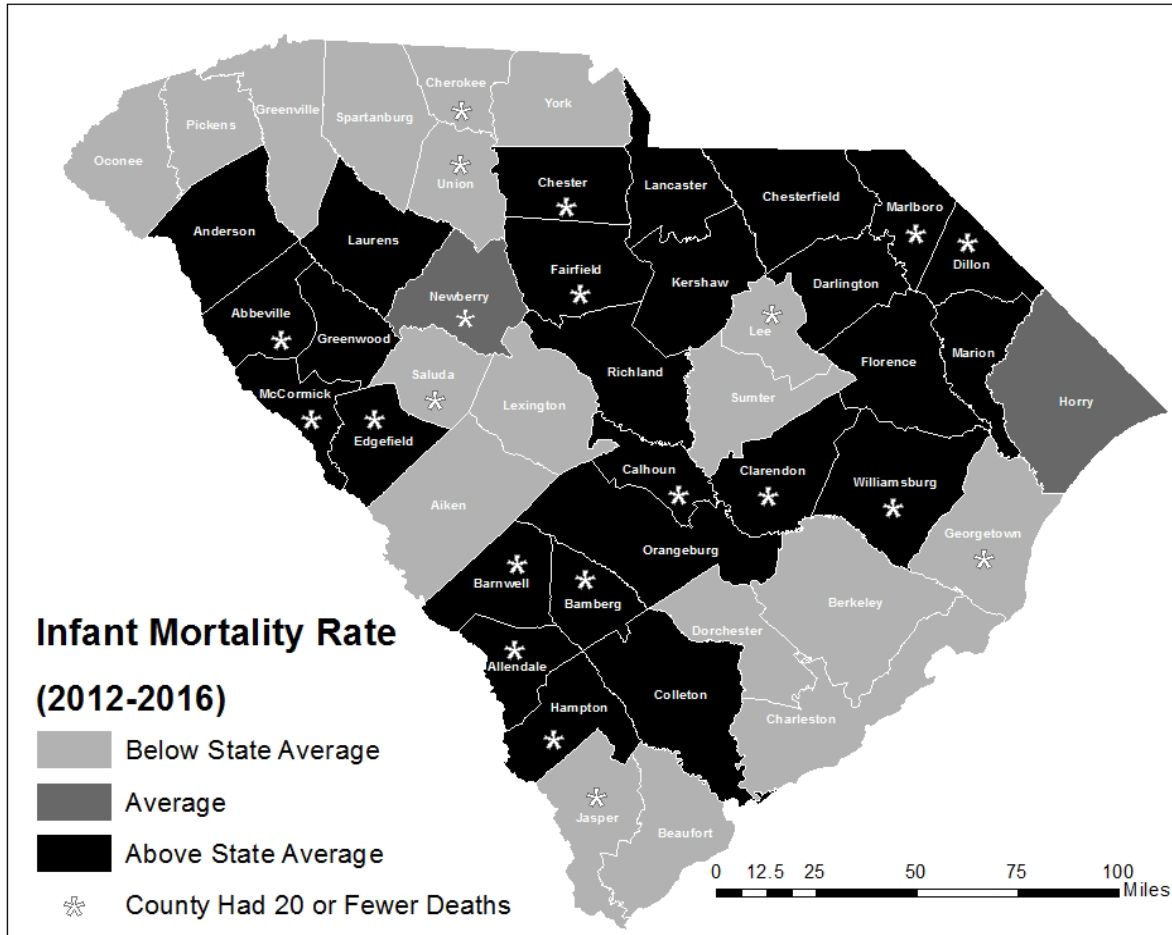


Figure 1-B
Percentage of Black and Other Infant Deaths by Birthweight Group
South Carolina, 2014-2016 Residence Data



**Figure 2.
Five Year Infant Mortality Rates by County
South Carolina
2012-2016
(Residence Data)**



NOTE: Counties with rates calculated with 20 or fewer deaths are unreliable and should be used cautiously.

Above State Average indicates a rate greater than 7.3.
State Average indicates a rate between 6.7 and 7.3 inclusive.
Below State Average indicates a rate lower than 6.7.
 Rate per 1,000 live births